

# ODSL

## Stage Lift Jacks



Capacity 100 - 600 ton | Stroke 150 mm | Max. Working Pressure 700 bar

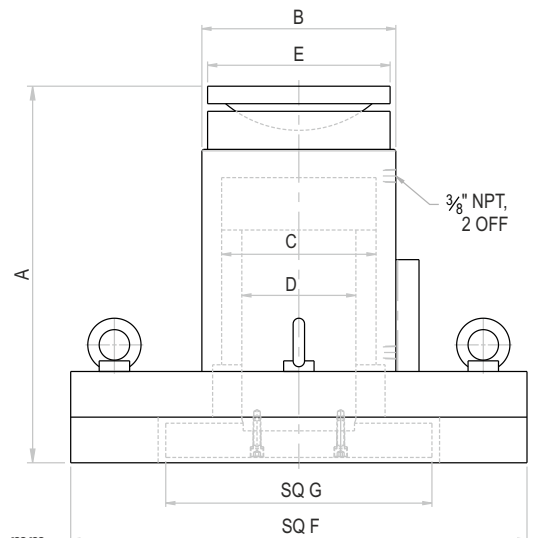


### Features / Application

- To lift, lower, reposition heavy structure in stages at variable heights
- Safety Pressure Relief valve in return line



Power Pack Unit for Synchronized Lift



ODSL Series - O Orione D Double acting SL Stage Lift 100 Capacity - ton 150 Stroke - mm

Rated capacity (ton)	Capacity @ 700 bar (kN)	Stroke (mm)	Model	Effective area (cm <sup>2</sup> )	Oil cap. (cc)	A Closed height (mm)	B Cylinder OD (mm)	C Bore dia. (mm)	D Ram dia. (mm)	E Saddle dia. (mm)	F Cylinder base (mm)	G Ram base (mm)	Wt. (Approx.) (kg)
100	1077	150	ODSL 100-150	153.9	2310	450	175	140	110	170	Sq 525	Sq 270	300
200	2199	150	ODSL 200-150	314.2	4715	495	255	200	150	240	Sq 600	Sq 350	480
300	3167	150	ODSL 300-150	452.4	6786	560	310	240	180	305	Sq 680	Sq 420	700
400	4008	150	ODSL 400-150	572.6	8589	640	350	270	220	336	Sq 750	Sq 450	1120
500	4948	150	ODSL 500-150	706.9	10605	670	400	300	240	360	Sq 800	Sq 550	1230
600	5987	150	ODSL 600-150	855.3	12830	705	430	330	270	405	Sq 900	Sq 600	1800

- Higher capacity & customized solutions on request. • Specifications are subject to change due to continual improvement.
- Capacity & Stroke specified are maximum safe limits. As safe practice, use at 80% of rating.