

# OLPVLS



## Span Lifting Jacks - Plain Ram, Single Acting, Spherical Saddle (Type - Load Return)

Capacity 250 - 1000 ton | Stroke 45 mm | Max. Working Pressure 700 bar



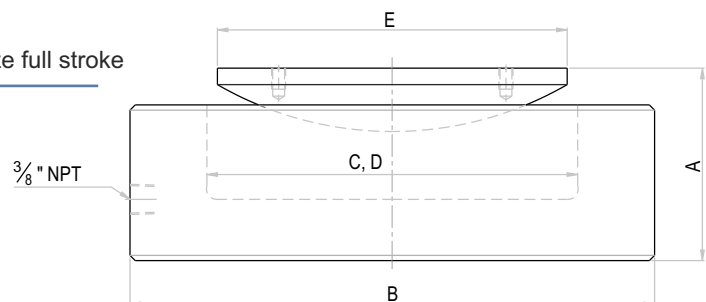
### Features /Application

- Ideally suited in low clearance & confined area
- Spherical saddle reduces damage to jack against off-center load
- Precision lifting, alignment of machinery, heavy structures & girders



### Caution

- Don't over stroke, NO GLAND NUT / RAM STOPPER
- Position jack on flat base - use base plate
- Provide support block for structure after lifting
- Ensure no gap between jack & load to be lifted, to utilize full stroke



OLPVLS Series - O Orione L Single acting Load return P Plain ram VL Very Low height S Spherical saddle (Tilting angle 5° Max.)  
250 Capacity - ton 45 Stroke - mm

Rated capacity (ton)	Capacity @ 700 bar (kN)	Stroke (mm)	Model	Effective area (cm <sup>2</sup> )	Oil cap. (cc)	A Closed height (mm)	B Cylinder OD (mm)	C Bore dia. (mm)	D Ram dia. (mm)	E Saddle dia. (mm)	Wt. (Approx.) (kg)
250	2661	45	OLPVLS 250-45	380.1	1711	140	280	220	220	200	65
400	4008	45	OLPVLS 400-45	572.6	2576	160	350	270	270	250	112
500	4948	45	OLPVLS 500-45	706.9	3181	170	400	300	300	290	158
800	7939	45	OLPVLS 800-45	1134.1	5104	190	505	380	380	340	275
1000	9930	45	OLPVLS 1000-45	1418.6	6384	220	560	425	425	380	392

- Higher capacity and customized solutions on request.
- Specifications are subject to change due to continual improvement.
- Capacity and Stroke specified are maximum safe limits. As safe practice, use at 80% of rating.