

Multi Strand Stressing / Post Tensioning Jacks with Integral Wedge Lock

Capacity 100 - 1500 ton | Stroke 300 mm | Working Pressure 600 bar

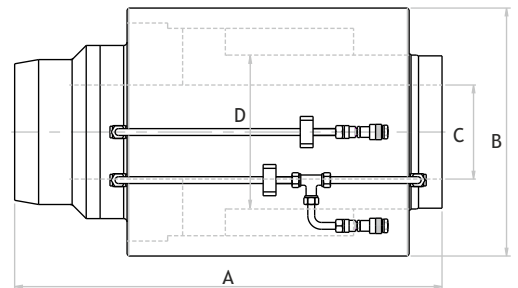
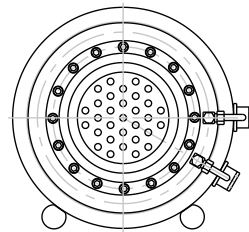


Features / Application

- Pre-stressing & post tensioning of strands in concrete structure
- Safety Pressure Relief valve in return line
- Suitable calibrated power pack units & accessories available



Customised



OMI Series - O Orione M Multi strand I Integral wedge lock 100 Capacity - ton 300 Stroke - mm

Rated capacity (ton)	Capacity @ 600 bar (kN)	Stroke (mm)	Model	Maximum No. of Strands		Effective area (cm ²)	Oil Cap. (cc)	A Closed height (mm)	B Cylinder OD (mm)	C C'hole dia. (mm)	D Ram dia. (mm)	Wt. (Approx.) (kg.)
				0.5" Size	0.6" Size							
100	1455	300	OMI 100-300	7	5	242.5	7275	810	270	90	160	220
200	2333	300	OMI 200-300	12	7	388.8	11664	845	350	145	230	360
300	3370	300	OMI 300-300	19	12	561.6	16847	870	400	175	280	460
480	5003	300	OMI 480-300	31	19	833.9	25017	925	520	195	340	910
680	7351	300	OMI 680-300	42	27	1225.2	36757	1000	600	240	375	1480
1050	10576	300	OMI 1050-300	61	42	1762.6	52880	1200	750	280	480	2210
1500	15780	300	OMI 1500-300	-	55	2630.1	78903	1285	960	340	540	4100



Power Pack Specification

Power pack Model	Pump Stage	Motor (HP / Phase)	Filling capacity (liters)	Pump flow (l/min)	Max. working pressure (bar)	Weight (Approx.) (kg.)	Operation
OPU007.5069	Single	7.5 / Three	80	3.7	700	260	Manual (Rotary DCV)
OPU007.5080	Single	7.5 / Three	120	3.7	700	315	Manual (Rotary DCV)

- Higher capacity & customized solutions on request.
- Specifications are subject to change due to continual improvement.
- Capacity & Stroke specified are maximum safe limits. As safe practice, use at 80% of rating.