

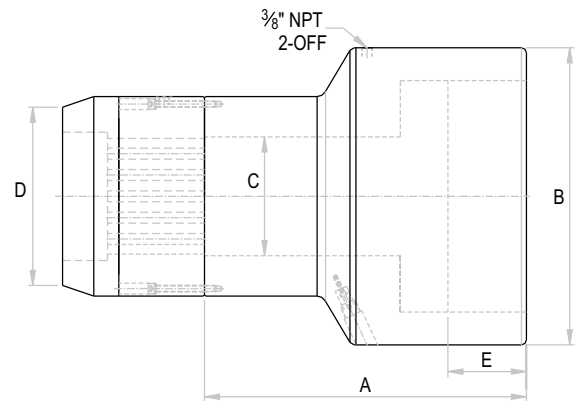
## Multi Strand Stressing / Post Tensioning Jacks - Long Profile

Capacity 200 - 425 ton | Stroke 150 - 300 mm | Working Pressure 650 bar



### Features / Application

- Mechanical stroke limiter (by-pass type)
- Safety Pressure Relief valve in return line
- Pre-stressing & post tensioning of strands in concrete structure
- Suitable calibrated power pack units & accessories available



### OML Series - O Orione M Multi strand L Long profile 200 Capacity - ton 300 Stroke - mm

Rated capacity (ton)	Capacity @ 650 bar (kN)	Stroke (mm)	Model	Maximum No. of Strands		Effective area (cm <sup>2</sup> )	Oil Cap. (cc)	A Closed height (mm)	B Cylinder OD (mm)	C C'hole dia. (mm)	D Nose dia. (mm)	E Depth (mm)	Wt. (Approx.) (kg.)
				0.5" Size	0.6" Size								
200	2013	300	OML 200-300	12	7	309.6	9290	785	315	120	240	327	265
300	3001	160	OML 300-160	12	7	500.3	8355	535	390	140	-	189	245
350	3517	300	OML 350-300	19	12	541.1	16234	830	430	165	290	330	450
425	4288	150	OML 425-150	31	19	659.7	9900	515	475	190	315	177	390



### Power Pack Specification

Power pack Model	Pump Stage	Motor (HP / Phase)	Filling capacity (liters)	Pump flow (l/min)	Max. working pressure (bar)	Weight (Approx.) (kg.)	Operation
OPU005111	Single	5 / Three	40	2.6	700	142	Manual (Rotary DCV)

- Higher capacity & customized solutions on request.
- Specifications are subject to change due to continual improvement.
- Capacity & Stroke specified are maximum safe limits. As safe practice, use at 80% of rating.