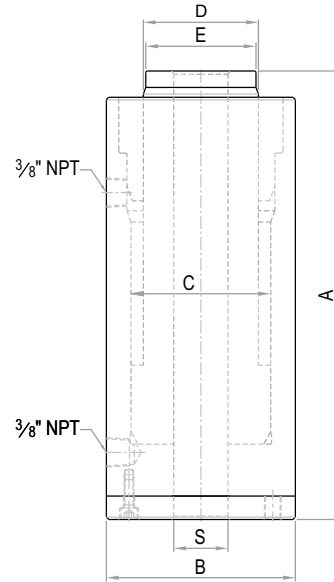


OADH



Aluminium Hollow Ram Jacks - Plain Ram, Double Acting (Type - Oil Return)

Capacity 30 - 100 ton | Stroke 75 - 150 mm | Max. Working Pressure 700 bar



Features / Application

- 50% lighter than a steel jack
- 5000 duty cycles
- Safety Pressure Relief valve in return port prevents damage, in case of accidental over-pressurization due to blockage in return line
- As hydraulic pullers with mechanical fixtures for removing & assembling bearing bushes, pins, cylinder liners, tube pullers of boilers / heat exchangers & gears of machinery
- As Bar & pre-stressing jacks at construction sites
- Anchorage / Re-bar Testing
- Safety Pressure Relief valve in return port
- Threaded stud & saddle optional



Caution

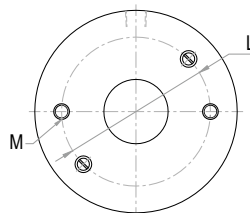
Aluminium jacks have lower fatigue life due to material properties & should NOT be used in high cycle application.

OADH Series - O Orione A Aluminium D Double acting Oil return H Hollow ram 30 Capacity - ton 75 Stroke - mm

Rated capacity (ton)	Capacity @ 700 bar (kN)	Stroke (mm)	Model	Effective area (cm ²)	Oil cap. (cc)	A Closed height (mm)	B Cylinder OD (mm)	C Bore dia. (mm)	S C'hole dia. (mm)	D Ram dia. (mm)	E Saddle dia. (mm)	Wt. (Approx.) (kg)
30	309	75	OADH 30-75	44.2	331	270	115	85	33	65	62	7.5
30	309	100	OADH 30-100	44.2	442	295	115	85	33	65	62	8.2
30	309	150	OADH 30-150	44.2	663	345	115	85	33	65	62	9.2
50	528	75	OADH 50-75	75.4	566	280	150	110	42	90	87	14.5
50	528	100	OADH 50-100	75.4	754	305	150	110	42	90	87	15.5
50	528	150	OADH 50-150	75.4	1131	355	150	110	42	90	87	17.5
60	627	75	OADH 60-75	89.5	672	295	170	125	54	100	97	19
60	627	100	OADH 60-100	89.5	895	320	170	125	54	100	97	20
60	627	150	OADH 60-150	89.5	1343	370	170	125	54	100	97	22.5
100	1001	75	OADH 100-75	142.9	1072	330	225	165	77	135	130	36
100	1001	100	OADH 100-100	142.9	1429	355	225	165	77	135	130	38.5
100	1001	150	OADH 100-150	142.9	2144	405	225	165	77	135	130	43

Mounting Details (Optional) :

Model	L PCD x No. of holes	M Bottom thread size	Thread depth (mm)
OADH 30	90x2	M10	17
OADH 50	110x2	M12	20
OADH 60	125x2	M12	20
OADH 100	165x2	M16	24



- Higher capacity and customized solutions on request.
- Specifications are subject to change due to continual improvement.
- Capacity and Stroke specified are maximum safe limits. Use at 80% of rating as safe practice.