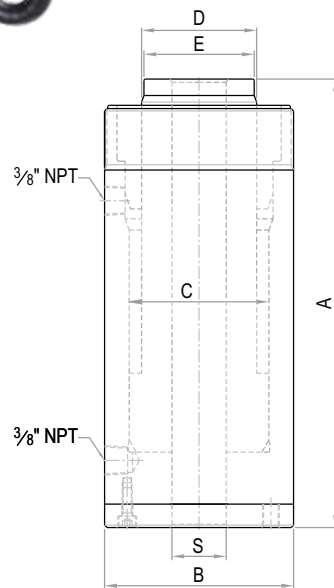


ODH



Hollow Ram Jacks - Plain Ram, Double Acting (Type - Oil Return)

Capacity 10 - 200 ton | Stroke 50 - 150 mm | Max. Working Pressure 700 bar



Features / Application

- As hydraulic pullers with mechanical fixtures for removing & assembling bearing bushes, pins, cylinder liners, tube pullers of boilers, heat exchangers & gears of machinery
- As Bar jacks & pre-stressing at construction sites
- Anchorage / Re-bar Testing
- Safety Pressure Relief valve in return port
- Threaded stud & saddle optional

Note: Refer Page 35 for Mounting Details



Customised

ODH Series - O Orione D Double acting Oil return H Hollow ram 10 Capacity - ton 75 Stroke - mm

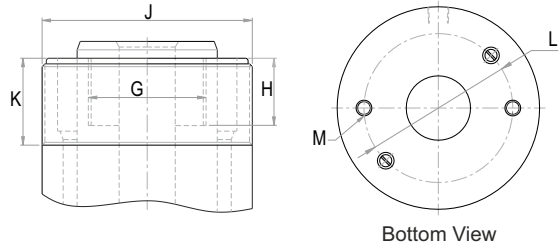
Rated capacity (ton)	Capacity @ 700 bar (kN)	Stroke (mm)	Model	Effective area (cm ²)	Oil cap. (cc)	A Closed height (mm)	B Cylinder OD (mm)	C Bore dia. (mm)	S C'hole dia. (mm)	D Ram dia. (mm)	E Saddle dia. (mm)	Wt. (Approx.) (kg)
10	103	75	ODH 10-75	14.7	110	210	75	50	20	40	38	6
10	103	100	ODH 10-100	14.7	147	235	75	50	20	40	38	6.8
20	202	50	ODH 20-50	28.9	144	205	100	70	27	60	58	11.5
20	202	100	ODH 20-100	28.9	289	255	100	70	27	60	58	14
20	202	150	ODH 20-150	28.9	433	305	100	70	27	60	58	16.5
30	309	50	ODH 30-50	44.2	221	220	115	85	33	70	67	15.5
30	309	100	ODH 30-100	44.2	442	270	115	85	33	70	67	19
30	309	150	ODH 30-150	44.2	663	320	115	85	33	70	67	22
50	528	100	ODH 50-100	75.4	754	280	140	110	42	90	87	27
60	641	75	ODH 60-75	91.6	687	265	155	125	54	100	97	31
60	641	100	ODH 60-100	91.6	916	290	155	125	54	100	97	33.5
60	641	150	ODH 60-150	91.6	1373	340	155	125	54	100	97	38.5
100	1093	75	ODH 100-75	156.1	1171	295	210	170	77	130	125	60
100	1093	100	ODH 100-100	156.1	1561	320	210	170	77	130	125	64
150	1649	150	ODH 150-150	235.6	3534	375	245	200	80	150	147	104
200	2111	150	ODH 200-150	301.6	4524	400	290	220	80	160	157	164

- Higher capacity and customized solutions on request.
- Specifications are subject to change due to continual improvement.
- Capacity and Stroke specified are maximum safe limits. Use at 80% of rating as safe practice.

Mounting Details

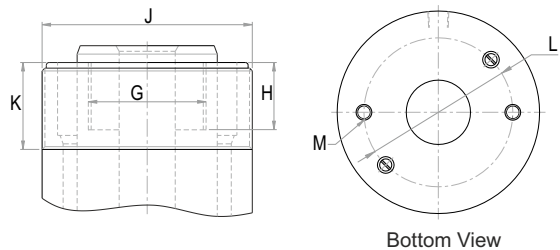
Capacity 10 - 200 ton | Max. Working Pressure 700 bar

Hollow Ram Jacks - Plain Ram, Single Acting, Spring Return with Collar Threads & Base Mounting Holes



Model	G Ram internal thread	H Thread depth (mm)	J Collar threads	K Length (mm)	L PCD x No. of holes	M Bottom thread size	Thread depth (mm)
OSH 10	M42x2P	22	M75x2P	30	60x2	M8	15
OSH 20	M56x2P	23	M105x2P	36	85x2	M10	17
OSH 30	M64x2P	30	M115x2P	40	90x2	M10	17
OSH 50	M80x2P	30	M150x3P	40	125x2	M12	18
OSH 60	M90x2P	33	M165x3P	45	135x2	M12	20
OSH 100	M120x2P	40	M215x3P	50	180x2	M16	24

Hollow Ram Jacks - Plain Ram, Double Acting, Oil Return with Collar Threads & Base Mounting Holes



Model	Pull Rated Capacity (ton)	Pull Capacity @ 700 bar (kN)	Pull Effective Area (cm ²)	G Ram internal thread	H Thread depth (mm)	J Collar threads	K Length (mm)	L PCD x No. of taps	M Bottom thread size	Thread depth (mm)
ODH 10	5	49	7.1	M30x2P	30	M75x2P	30	60x2	M8	12
ODH 20	7	71	10.2	M42x2P	30	M100x3P	30	75x2	M10	17
ODH 30	13	128	18.3	M52x2P	35	M115x3P	40	90x2	M10	17
ODH 50	22	220	31.4	M68x2P	40	M140x3P	40	110x2	M12	20
ODH 60	31	309	44.2	M72x2P	40	M155x3P	40	125x2	M12	20
ODH 100	66	660	94.2	M95x2P	50	M210x3P	50	165x2	M16	24
ODH 150	96	962	137.4	M105x2P	50	M245x4P	50	200x2	M16	24
ODH 200	125	1253	179.1	M110x2P	60	M290x4P	50	220x2	M16	24

• Specifications are subject to change due to continual improvement.