

Hollow Ram Jacks - Plain Ram, Single Acting (Type - Spring Return)

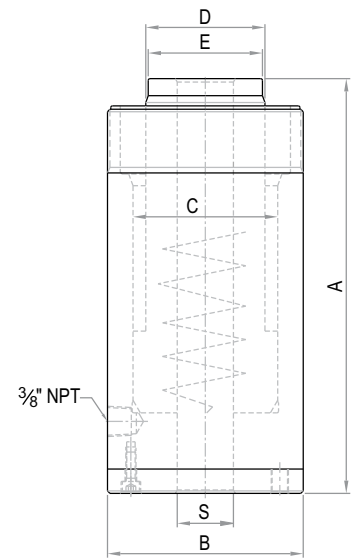
Capacity 10 - 100 ton | Stroke 50 - 150 mm | Max. Working Pressure 700 bar



Features / Application

- As hydraulic puller with mechanical fixtures
- Removal & assembly of pins, bushes, bearings, sprockets, gears & general maintenance
- Threaded stud & saddle optional
- Anchorage / Re-bar Testing

Note: Refer **Page 35** for **Mounting Details**



OSH Series - O Orione S Single acting Spring return H Hollow ram 10 Capacity - ton 50 Stroke - mm

Rated capacity (ton)	Capacity @ 700 bar (kN)	Stroke (mm)	Model	Effective area (cm ²)	Oil cap. (cc)	A Closed height (mm)	B Cylinder OD (mm)	C Bore dia. (mm)	S C'hole dia. (mm)	D Ram dia. (mm)	E Saddle dia. (mm)	Wt. (Approx.) (kg)
10	110	50	OSH 10-50	15.7	79	165	75	60	20	50	50	4.6
10	110	75	OSH 10-75	15.7	118	190	75	60	20	50	50	5.3
10	110	100	OSH 10-100	15.7	157	215	75	60	20	50	50	6
20	231	50	OSH 20-50	33.0	165	170	105	85	27	75	73	10.5
20	231	100	OSH 20-100	33.0	330	220	105	85	27	75	73	13.5
20	231	150	OSH 20-150	33.0	495	270	105	85	27	75	73	16
30	298	50	OSH 30-50	42.6	213	195	115	95	33	80	78	13
30	298	75	OSH 30-75	42.6	320	220	115	95	33	80	78	14.5
30	298	100	OSH 30-100	42.6	426	245	115	95	33	80	78	16
30	298	150	OSH 30-150	42.6	639	295	115	95	33	80	78	19
50	550	75	OSH 50-75	78.5	589	230	150	125	42	100	97	25
50	550	100	OSH 50-100	78.5	785	255	150	125	42	100	97	27
60	605	75	OSH 60-75	86.4	648	245	165	135	54	110	107	32
60	605	100	OSH 60-100	86.4	864	270	165	135	54	110	107	35
60	605	150	OSH 60-150	86.4	1296	320	165	135	54	110	107	40.5
100	990	75	OSH 100-75	141.4	1060	270	215	180	77	150	146	58
100	990	100	OSH 100-100	141.4	1414	295	215	180	77	150	146	62

- Higher capacity and customized solutions on request.
- Specifications are subject to change due to continual improvement.
- Capacity and Stroke specified are maximum safe limits. Use at 80% of rating as safe practice.



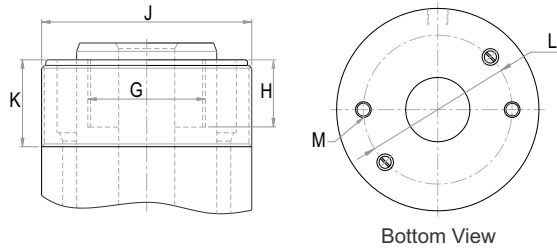
Select suitable Pumping Units and Accessories

Pg. 44 - 49

Mounting Details

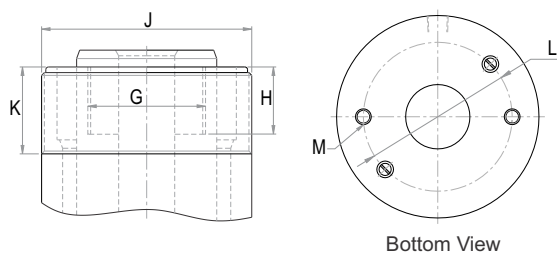
Capacity 10 - 200 ton | Max. Working Pressure 700 bar

Hollow Ram Jacks - Plain Ram, Single Acting, Spring Return with Collar Threads & Base Mounting Holes



Model	G Ram internal thread	H Thread depth (mm)	J Collar threads	K Length (mm)	L PCD x No. of holes	M Bottom thread size	Thread depth (mm)
OSH 10	M42x2P	22	M75x2P	30	60x2	M8	15
OSH 20	M56x2P	23	M105x2P	36	85x2	M10	17
OSH 30	M64x2P	30	M115x2P	40	90x2	M10	17
OSH 50	M80x2P	30	M150x3P	40	125x2	M12	18
OSH 60	M90x2P	33	M165x3P	45	135x2	M12	20
OSH 100	M120x2P	40	M215x3P	50	180x2	M16	24

Hollow Ram Jacks - Plain Ram, Double Acting, Oil Return with Collar Threads & Base Mounting Holes



Model	Pull Rated Capacity (ton)	Pull Capacity @ 700 bar (kN)	Pull Effective Area (cm ²)	G Ram internal thread	H Thread depth (mm)	J Collar threads	K Length (mm)	L PCD x No. of taps	M Bottom thread size	Thread depth (mm)
ODH 10	5	49	7.1	M30x2P	30	M75x2P	30	60x2	M8	12
ODH 20	7	71	10.2	M42x2P	30	M100x3P	30	75x2	M10	17
ODH 30	13	128	18.3	M52x2P	35	M115x3P	40	90x2	M10	17
ODH 50	22	220	31.4	M68x2P	40	M140x3P	40	110x2	M12	20
ODH 60	31	309	44.2	M72x2P	40	M155x3P	40	125x2	M12	20
ODH 100	66	660	94.2	M95x2P	50	M210x3P	50	165x2	M16	24
ODH 150	96	962	137.4	M105x2P	50	M245x4P	50	200x2	M16	24
ODH 200	125	1253	179.1	M110x2P	60	M290x4P	50	220x2	M16	24

• Specifications are subject to change due to continual improvement.