

Span Lifting Jacks - Plain Ram with Cribbing Block, Single Acting, Spherical Saddle with Gland Nut / Ram Stopper (Type - Spring Return)

Capacity 75 - 250 ton | Stroke 30 - 100 mm | Max. Working Pressure 700 bar

Features/Application

- Ideally suited in low clearance & confined area
- Spherical saddle reduces damage to jack against off-center load
- Ideally suited for precision lifting, alignment of machinery, heavy structures & girders requiring sustained load holding

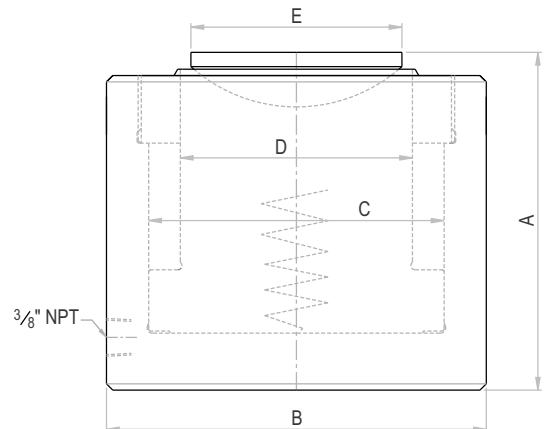


Caution

- Position jack on flat base - use base plate
- Provide support block for structure after lifting
- Ensure no gap between jack & load to be lifted, to utilize full stroke



* Use Cribbing block as support after lifting



CSLS Series - C Customised S Single acting Spring return L Low height S Spherical saddle (Tilting angle 5° max.)
75 Capacity - ton 30 Stroke - mm

Rated capacity (ton)	Capacity @ 700 bar (kN)	Stroke (mm)	Model	Effective area (cm ²)	Oil cap. (cc)	A Closed height (mm)	B Cylinder OD (mm)	C Bore dia. (mm)	D Ram dia. (mm)	E Saddle dia. (mm)	Wt. (Approx.) (kg)
75	770	30	CSLS 75-30	153.9	462	125	165	140	110	100	17
100	1077	60	CSLS 100-60	153.9	924	160	180	140	110	100	25
200	2199	55	CSLS 200-55	314.2	1728	180	255	200	160	150	63
250	2661	60	CSLS 250-60	380.1	2281	200	280	220	180	165	86
250	2661	100	CSLS 250-100	380.1	3801	240	280	220	180	165	102

- Higher capacity and customized solutions on request.
- Specifications are subject to change due to continual improvement.
- Capacity and Stroke specified are maximum safe limits. As safe practice, use at 80% of rating.



Choose suitable Pumping Unit and Accessories
 Pg. 44 - 49