

Pancake Jacks - Threaded Ram with Safety Lock Nut, Single Acting, Spherical Saddle (Type - Load Return)

Capacity 50 - 1200 ton | Stroke 45 - 50 mm | Max. Working Pressure 700 bar



Features / Application

- Used in low clearance confined area
- Spherical saddle reduces damage to jack against off-center load
- Threaded ram with locknut facilitates sustained load holding
- Ideally suited for segment / girder alignment in construction, precision lifting & alignment of heavy structures
- **Ensure no gap between jack & load to be lifted, to utilize full stroke**

Special Features



Stroke Limiter provided

Oil will leak from top, without damaging the seal

Unique design guiding prevents scoring during off-center loading



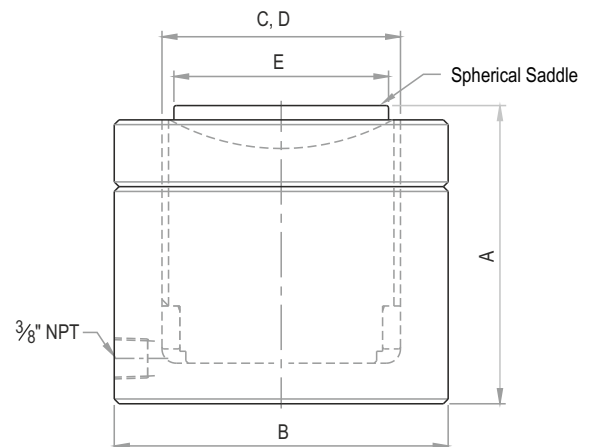
Caution



NO RAM STOPPER, Don't over stroke

Stop lifting once "Red Band" on ram appears

Jack being compact, provide leveled & solid support for entire base area & top



OLTVL Series - O Orione L Single acting Load return T Threaded ram VL Very Low height 50 Capacity - ton 50 Stroke - mm

Rated capacity (ton)	Capacity @ 700 bar (kN)	Stroke (mm)	Model	Effective area (cm ²)	Oil cap. (cc)	A Closed height (mm)	B Cylinder OD (mm)	C Bore dia. (mm)	D Ram dia. (mm)	E Saddle dia. (mm)	Saddle max. tilt angle	Wt. (Approx.) (kg)
50	550	50	OLTVL 50-50	78.5	393	125	140	100	100	90	5°	15
100	1077	50	OLTVL 100-50	153.9	770	140	180	140	140	125	5°	28.5
150	1589	45	OLTVL 150-45	227.0	1022	150	220	170	170	160	5°	44
200	2199	45	OLTVL 200-45	314.2	1414	155	255	200	200	180	5°	61
250	2661	45	OLTVL 250-45	380.1	1710	160	280	220	220	200	5°	76
300	3167	45	OLTVL 300-45	452.4	2036	170	310	240	240	220	4°	99
400	4008	45	OLTVL 400-45	572.6	2577	180	350	270	270	250	4°	130
500	4948	45	OLTVL 500-45	706.9	3181	195	400	300	300	290	3°	185
800	7939	45	OLTVL 800-45	1134.1	5104	245	505	380	380	340	3°	369
1000	9930	45	OLTVL 1000-45	1418.6	6384	260	560	425	425	380	3°	477
1200	12405	45	OLTVL 1200-45	1772.1	7974	280	600	475	475	400	3°	597

- Higher capacity and customized solutions on request.
- Specifications are subject to change due to continual improvement.
- Capacity and Stroke specified are maximum safe limits. Use at 80% of rating as safe practice.