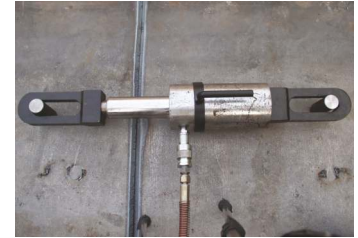


Pull Cylinders - Plain Ram, Single Acting (Type - Spring Return)

Capacity 10 - 30 ton | Stroke 150 mm | Max. Working Pressure 700 bar



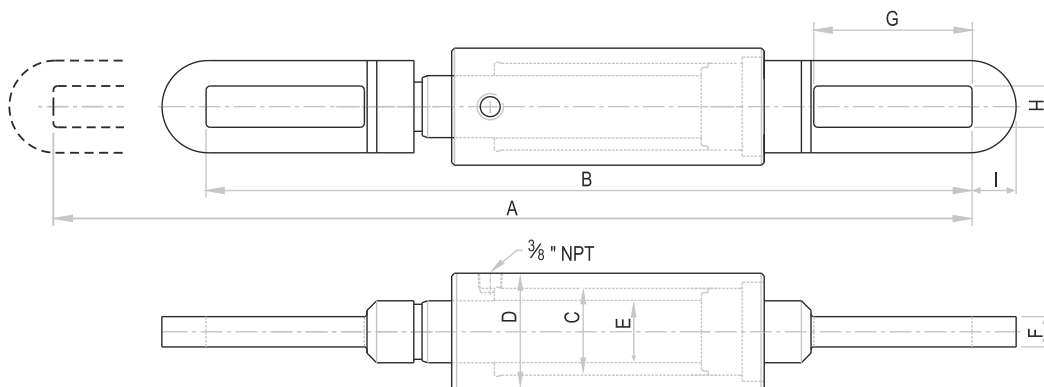
Customised



Double Acting

Features / Application

- Used as Turn buckle mechanism for heavy loads
- For pulling & tensioning in heavy fabrication & maintenance
- Removable clevis eyes to use cylinder & piston rod threads



OSPC Series - O Orione S Spring return P Pull C Cylinder 10 Capacity - ton 150 Stroke - mm

Rated capacity (ton)	Capacity @ 700 bar (kN)	Stroke (mm)	Model	Effective area (cm ²)	Oil capacity (cc)	A Extended (mm)	B Closed height (mm)	C Bore dia. (mm)	E Ram dia. (mm)	D Cylinder OD (mm)	F Link thickness (mm)	G Slot opening (mm)	H Slot width (mm)	I Slot to link end (mm)	Wt. (Approx.) (kg)
10	107	150	OSPC 10-150	15.3	230	691	541	63	45	85	22	115	30	33.5	14
20	225	150	OSPC 20-150	32.1	485	770	620	85	56	115	28	125	40	36	28
30	332	150	OSPC 30-150	47.4	715	820	670	100	63	135	32	132	45	40	48

- Higher capacity and customized solutions on request.
- Specifications are subject to change due to continual improvement.
- Capacity and Stroke specified are maximum safe limits. As safe practice, use at 80% of rating.